

JUNE NEWSLETTER

Celebrating Our Mentors

Miss Keno



Miss Keno loves reading and writing and is thrilled to share her passion with young people. She was raised in Tokyo and the US and graduated from an international high school in Japan. She then moved to the UK, where she studied Art History at University College London. After a stint working in the film and TV industry for a few years, she began working as both a tutor in English and History and a professional copywriter for companies and organizations such as SK-II, Rakuten, and Greenpeace. Her writing has also been published in outlets including The Guardian, Little White Lies, and Tabloid Art History. Miss Keno is delighted to be working with all of the fantastic students at SpiderSmart and Academic Pathways!

You're invited:

Fiesta with us!

We are SO grateful to all of our amazing families for making our teaching work a true joy in the summer and in EVERY season!

It's been a year since we reopened our doors officially, and we want to say thanks to all of you with an evening of food and fun!

Location: The Rockville Science Center has kindly agreed to host us!
They are in Town Square, 36 Maryland Avenue.

When: Friday, June 10th
6-9pm.

Outdoor seating will be available.

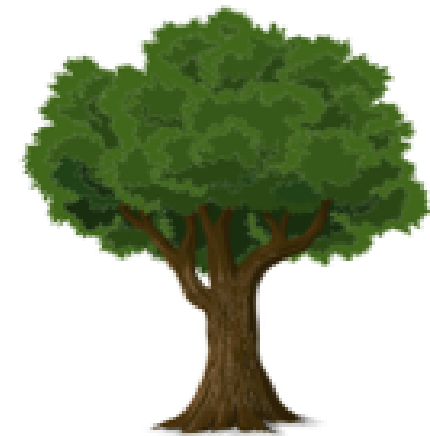
RSVP by email or via cell # if preferred (and/or questions and dietary preferences): 2406161600

beyond the classroom



Take it outside!

Feeling the call of the summer sunshine? Good news: science shows that bringing your work outdoors can boost academic performance.



Absorbing, understanding, and retaining materials

Studying around trees improves short-term memory by 20% and results in more detailed recollection of information.

Staring at green scenery can restore focus and improve concentration by 8%.

Improved Learning Reception

Energy boost: spending 20 minutes outdoors is equivalent to one cup of coffee.

When outdoors, cortisol levels lower by 12% and relaxation state increases by 55% for more effective learning.

Cognitive Function

Learning outside increases creative problem solving and results in improved teamwork.

*Source: "Studying Outside Vs. Inside: The Pros and Cons"
The University of Arizona (Global Campus)*

