

JULY NEWSLETTER

Who made the world?

Who made the swan, and the black bear?

Who made the grasshopper?

This grasshopper, I mean—

the one who has flung herself out of the grass,

the one who is eating sugar out of my hand,

who is moving her jaws back and forth instead of up and down —

who is gazing around with her enormous and complicated eyes.

Now she lifts her pale forearms and thoroughly washes her face.

Now she snaps her wings open, and floats away.

I don't know exactly what a prayer is.

I do know how to pay attention, how to fall down

into the grass, how to kneel in the grass,

how to be idle and blessed, how to stroll through the fields

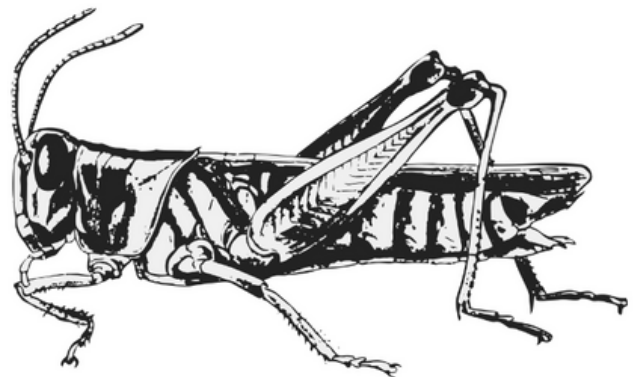
which is what I have been doing all day.

Tell me, what else should I have done?

Doesn't everything die at last, and too soon?

Tell me, what is it you plan to do

With your one wild and precious life?



Mary Oliver

The Summer Day

Here at Academic Pathways, every moment matters. In fact, we are committed to stringing together moments of enlightening and engaging experiences, even when the heat is ON both figuratively and metaphorically.

UPDATES FROM OUR CENTER...



Wednesdays are now fully booked for in-person classes at Academic Pathways, so we'll be extending our weekday center schedule to 3-8pm for the rest of the summer. As usual, virtual timeslots are available 7am-10pm.

For August, we will be giving referral discounts to both the referring family AND the referred family! Your referrals mean everything to us, so we thank you in advance for sharing with friends, family, and your circles both far and wide! Whether you refer families for virtual or in-center classes, there will be a collective \$100 awaiting you.

A hearty thank you as well to our Creative Writing workshop students and instructors for a July filled with memorable poems, stories, and personal essays.

**Next workshop coming soon: Self-Discovery through Filmmaking
Stay tuned! (And stay cool. :))**